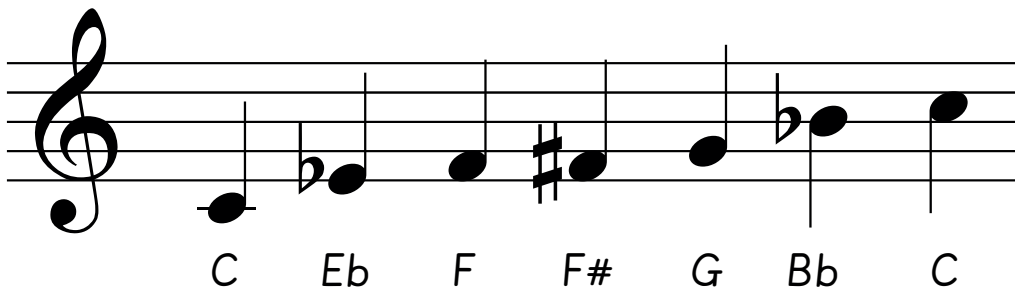




Blues music is often sad and emotional, which is why we say we have 'the blues' when we feel sad. Its main features are the 12-bar blues and the blues scale, and it includes a lot of improvisation.

### The Blues scale

The Blues scale to accompany our 12-bar Blues is made up of these notes:



### Vocabulary

**12-bar blues** A series of chords played in a specific order.

1 CCCC	2 CCCC	3 CCCC	4 CCCC
5 FFFF	6 FFFF	7 CCCC	8 CCCC
9 GGGG	10 FFFF	11 CCCC	12 CCCC

<b>chord</b>	Two or more notes that are played at the same time and work in harmony.
<b>scale</b>	Any set of musical notes which are in order of their pitch.
<b>ascending scale</b>	A scale in which the pitch of the notes goes up.
<b>descending scale</b>	A scale in which the pitch of the notes goes down.
<b>blues scale</b>	A set of notes used to play a melody over a 12-bar blues.
<b>improvisation</b>	Making up music as it is played or performed.
<b>bent notes</b>	A musical note that varies in pitch usually going up slightly at the end.
<b>bar</b>	A section of music with a specific number of beats (in blues there are usually 4 beats in a bar).
<b>quaver</b>	A note which last for half a beat.